

dataTrack™ Vibration Sensor

The **Vibration Sensor** utilizes Long Range (LoRa) radio frequency to monitor vibration and temperature. Simply place on equipment such as pumps, HVAC system, motors, and more. See real-time notifications on the portal.



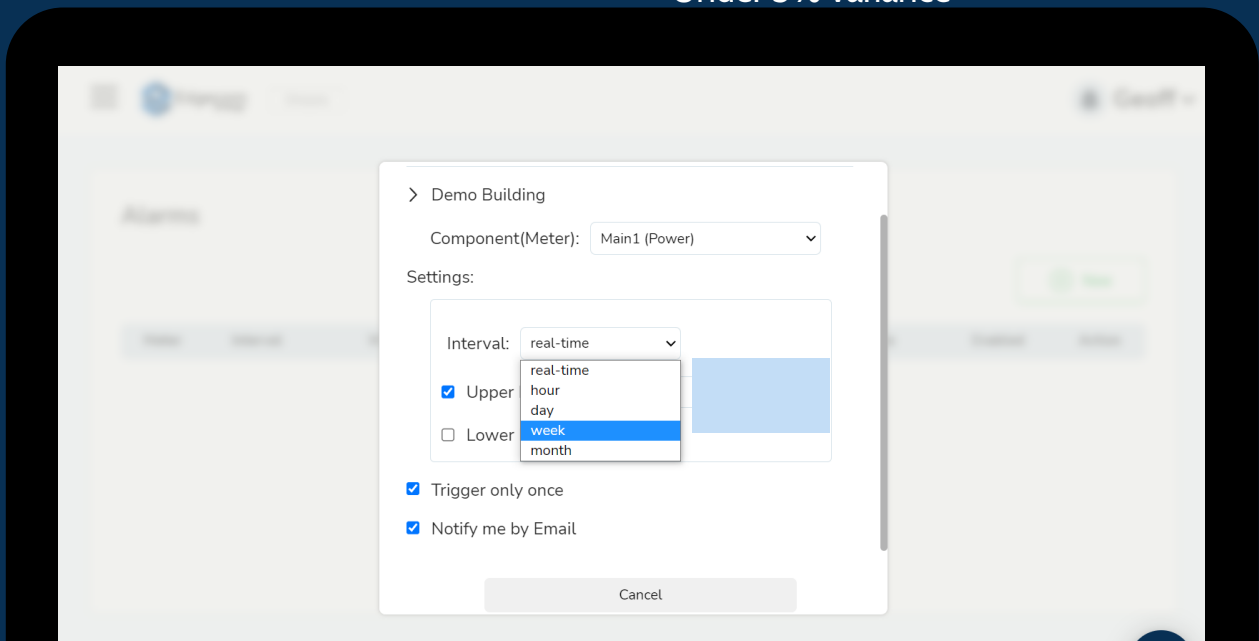
Preventative Maintenance
Customized threshold alarms for machine health monitoring



Customized Alerts
Set alarms based on live outliers or daily and weekly averages

KEY FEATURES

- Battery powered - no power supply required
- 3-axis accelerometer and temperature sensor
- Temperature sensor measurement range between -20°C ~ 120°C
- Sensitivity -148dB
- Stud mount or Magnet base
- Under 5% variance



dataTrack™ Vibration Sensor Spec Sheet p1



Wireless Communication

- Frequency Band EU 863-870 (MHz) / US 902-928 (MHz)
- Spreading Factor 7-12
- Transmit Power Up to 20dBm
- Topology Star (LoRa/LoRaWAN)
- Sensitivity -148dB
- Data Rate 50 kbps at FSK mode EU | 21.9 kbps at SF7 mode US/TW | 5.47 kbps at SF7 mode for JP

General

- Power Input 3.6V AA Battery *2pcs (Not included)
- Battery Life 2 years (once per hour data update interval time)
- LED Indicator Power, Tx
- Configuration Interface Micro-B USB
- IP Class IP66
- Mounting Stud mount, Mounting pad and Adhesives
- Dimensions (HxD) 84.7 x 48.3 mm
- Certification CE (RED), FCC, NCC, TELEC, VCCI, BSMI, RCM, ANATEL

Environment

- Operating Temperature -20°C ~ 80°C (Battery powered)
- Operating Humidity 10% ~ 95% RH
- Storage Temperature -25°C ~ 90°C
- Storage Humidity 5% ~ 95% RH

Temperature Sensor

- Measurement Range -20°C ~ 120°C
- Accuracy -2°C with 85°C
- (TA = 27°C, Directly contact with heat source. Metal Base of WISE-2410) -5°C with 120°C



dataTrack™ Vibration Sensor Spec Sheet p2



3-Axis Accelerometer Sensor

- | | |
|---|---|
| • Axis | X-Y-Z |
| • Frequency Range | 10-1000Hz |
| • Amplitude Range | ±16g |
| • Statistical Time-Domain | Velocity RMS, Acceleration (RMS & peak), Displacement, Kurtosis, Crest factor, Skewness, Standard deviation |
| • Output Data Rate | 6600Hz |
| • Resolution | 10 bit (all g range) |
| • Accuracy | Under 5% |
| • Noise | ±40mg |
| • Nonlinearity | ±0.5 % |
| • Cross-Axis Sensitivity | ±1 % |
| • Sensitivity Change Due to Temperature | ±0.02 %/°C |

Smart Condition Monitoring Sensor

- WISE-2410-NB Wireless Smart Condition Monitoring Sensor - US 902-928 (MHz)

Accessories List

- 1760002647-01 Bat.Cylindrical 3.6V/2500mAh AA Li/SOCI2
- 25F7000004N000 Magnet base D30XH9mm for installation
- WISE-2410-MTB01 Metal base for installation

Unit: mm

